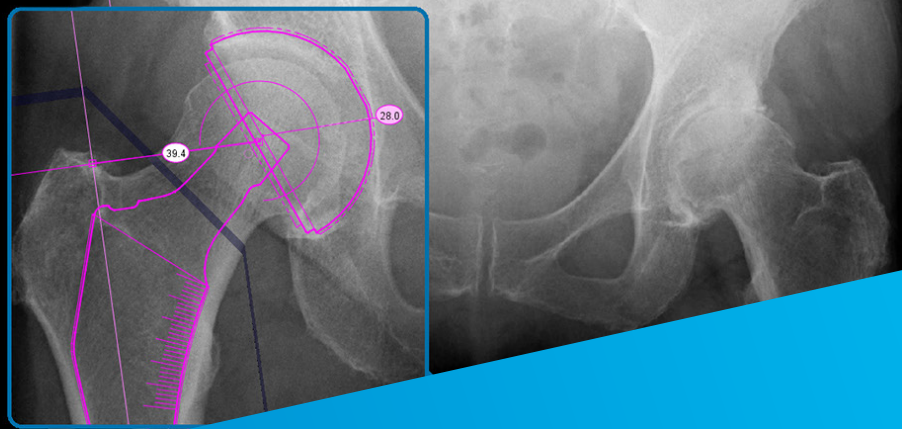


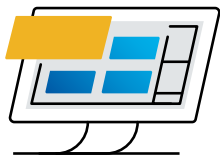
# Materialise OrthoView

Effortless planning.  
For all procedures.



OrthoView is the complete orthopaedic planning solution, offering expert support and smart tools for fast and reliable results.

## Complete solution



### Specialized tools for all procedures

For joint replacement, trauma, osteotomy, spine, and pediatric procedures.

### Flexible, accessible planning

Plan multiple implants and procedures on the same case, with customizable tools and image reports, your plans are always accessible and editable.

## Reliable results



### Smart, automated tools

Automatic template positioning and scaling. Only compatible sizes and options can be selected, preventing incompatible implant selection.

### Validated tools

We collaborate with leading physicians to create new planning tools, enhance existing ones, and technically and clinically verify templates.

## Expert support

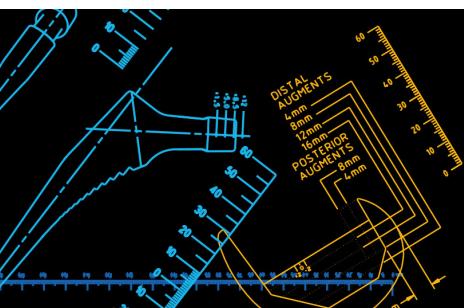


### Onboarding and maintenance

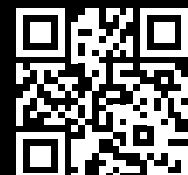
We support you with software integration and offer maintenance packages.

### Broad educational offer

Tutorials, training courses, and workshops with leading specialists.



Learn more on our website



L-103154